



Enriching Lives

SINGLE PLATE WAFER CHECK (NON RETURN) VALVES

AS PER API : 6D



KIRLOSKAR BROTHERS LIMITED

SINGLE PLATE WAFER CHECK VALVES

Widely accepted by Municipal Corporations, Irrigation Authorities, Water Supply Authorities, National Thermal Power Corporation and Industrial users.

Designed as per latest editions of API : 6D specifications.

Applications :

- Single Plate Check Valves are used in pipe lines to prevent reverse flow of water and water hammer to the pumps from rising mains
- Precise machined body seat surface and Disc seats for drop tight seat
- The light weight disc is provided with quick bonc spring for slamless closure
- Special D-Shaped High torsion spring coil ensures quick valve closure
- Innovative Hinge pin holding design for maintenance free operation
- Suitable for Horizontal and vertical pipe line
- Flexible Installation to suit pipe orientation
- Opening and closing of the valve will take place at an extremely low-pressure difference over the valve disc
- The eccentric disc shaft combination with the disc seat guarantees a positive shut off returning media
- Extremely low opening pressure
- Low pressure drop

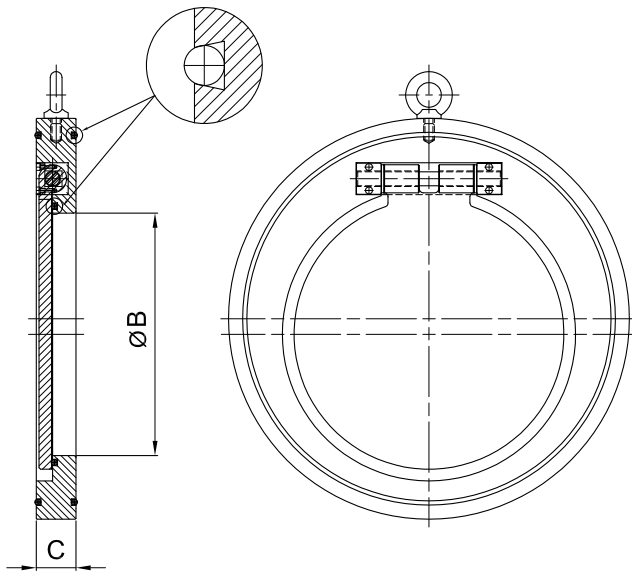
Material of Construction :

Scope	Body, Cover,	Disc	Seat	Spring
Standard	CI IS:210 Gr. Fg.260	CS ASTM A216 Gr. WCB	Nitrile Rubber	ST.ST.AISI 316
Optional	Ductile Iron CS ASTM A216 Gr. WCB SS ASTM A351 Gr. CF8 SS ASTM A351 Gr. CF8M Mild Steel	SS ASTM A351 Gr. Cf8 SS ASTM A351 Gr. CF8M MS	EPDM SILICON VITON PTFE	

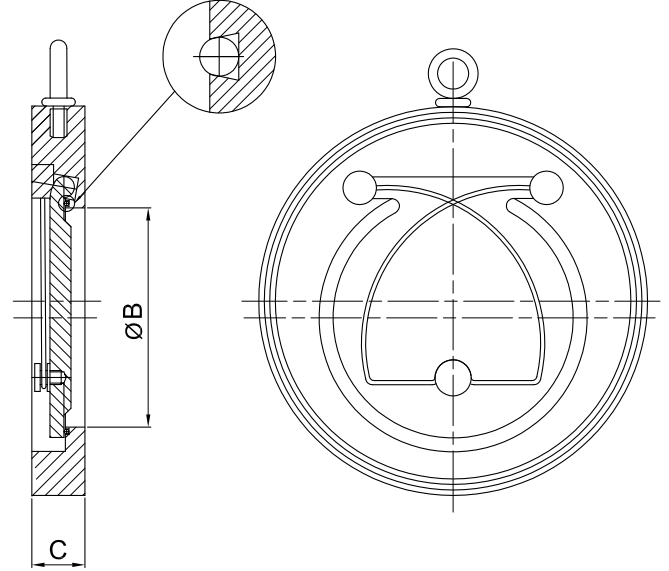
Note : * For special material of construction ,Contact Design Office.

* Valves above 300mm will be without spring

General Outline Drawing :



Valve Size
350 mm & Above



Valve Size
40 mm To 300 mm

General Outline Dimensions :

Class 150

Valve Size	40	50	65	80	100	125	150	200	250	300	350	400	450	500	600
ØB	20	30	40	52	71.5	93	114	157	195	240	270	311	361	392	480
C	19	19	19	19	19	19	19	29	29	38	44	51	60	64	70

Note * All Dimensions are in 'mm' otherwise stated.

Technical Specifications :

Design and Manufacturing Standard	API 6D
Testing Standard	API 598
Size Range	40 mm - 600 mm

Note: * For Higher Pressure Rating contact Design Office.

End Connection :

Scope	Mounting Between Flanges
Standard	ANSI B 16.5 Class- 150
Optional	BS: 10-Table D and E , IS : 1538 Table 4 and 6 .

Accessories :

- Companion Flanges & Fasteners

Hydrostatic test Pressures Kg/Cm2 :

Pressure Rating	Hydrostatic test Pressures Kg/Cm2:	
	Body	Seat
Class- 150	30	22
Class- 300	79	58
PN 10	15	10
PN 16	24	16

OUR GLOBAL PRESENCE



ABOUT KBL

Kirloskar Brothers Limited (KBL) is a world class pump manufacturing company with expertise in engineering and manufacture of systems for fluid management. Established in 1888 and incorporated in 1920, KBL is the flagship company of the \$ 2.1 billion Kirloskar Group. As the market leader in fluid management, KBL provides complete fluid management solutions for large infrastructure projects in the areas of water supply, power plants, irrigation, oil & gas and marine & defence. We engineer and manufacture industrial, agriculture & domestic pumps, valves and hydro turbines.

In 2003 KBL acquired SPP Pumps, United Kingdom and established SPP Inc., Atlanta, USA, as a wholly owned subsidiary of SPP, UK and expanded its international presence. In 2007, Kirloskar Brothers International B.V., The Netherlands and Kirloskar Brothers (Thailand) Ltd, a wholly owned subsidiary in Thailand were incorporated. In 2008, KBL incorporated Kirloskar Brothers Europe BV (Kirloskar Pompen BV since June 2014), a joint venture between Kirloskar Brothers International BV and Industrial Pump Group, The Netherlands. In 2010 KBL further consolidated its global position by acquiring Braybar Pumps, South Africa. SPP MENA was established in Egypt in 2012. KBL has a joint venture company with Ebara Corporation, Japan since 1988 for the manufacture of API 610 standard pumps. Kirloskar Corrocoat Private Limited is joint venture cooperation with Corrocoat Ltd., UK since 2006. KBL acquired The Kolhapur Steel Limited in 2007 and Hematic Motors in 2010. In 2014, KBL acquired SyncroFlo. Inc, the largest independent fabricator of commercial and municipal domestic water.

KBL has eight manufacturing facilities in India at Kirloskarvadi, Dewas, Kondhapuri, Shirval, Sanand, Kaniyur, Kolhapur and Karad. In addition, KBL has seven manufacturing and packaging facilities in Egypt, South Africa, Thailand, The Netherlands, United Arab Emirates, United Kingdom and United States of America. KBL has 12,700 channel partners in India and 80 overseas and is supported by best in class network of Authorised Centres and Authorised Refurbishment Centres across the country.

All plants of KBL are ISO 9001, ISO 14001 and OHSAS 18001 standards certified. They apply Total Quality Management tools using European Foundation for Quality Management (EFQM) model. The Kirloskarvadi plant of KBL is a state of art integrated manufacturing facility having one of Asia's largest hydraulic research centre with testing facility up to 5000 kW and 50,000 m³/hour.

KBL is the only pump manufacturing company in India and ninth in the world to be accredited with the N and NPT certification by American Society of Mechanical Engineers (ASME).



Scan this code with your smart phone to know more about KBL

As we are constantly endeavouring to improve the performance of our products / equipment, we reserve the right to make alterations from time to time and as such our products / equipments may differ from that detailed in this publication. For latest information you may get in touch with our Regional Sales Offices.



Enriching Lives

KIRLOSKAR BROTHERS LIMITED

A Kirloskar Group Company

GLOBAL HEADQUARTERS :

"YAMUNA", Survey No. 98 (3 to 7), Baner,
Pune - 411045, INDIA
Tel.: +91-20 27214444 Fax : +91-20 27211117
email : kblin@kbl.co.in Website : www.kirloskarpumps.com

REGISTERED OFFICE :

Udyog Bhavan, Tilak Road,
Pune - 411002, INDIA
Tel.: +91-20 24440770 Fax: +91-20 24440156

WORKS :

Kondhapuri, Gat # 252/2 + 254/2, Tal. : Shirur,
District Pune - 412208, INDIA
Tel.: 02137-240022 / 240044

Our Group Companies



KIRLOSKAR BROTHERS LIMITED
SPCV-08-2014-00

Pumps | Valves | Hydro Turbines | Turnkey Projects

Water Resource Management | Irrigation | Power | Industry | Gas, Oil & Defence | Building & Construction | Distribution | Customer Service & Spares