



Enriching Lives

## BALL VALVES

AS PER IS: 9890 / BS EN ISO 17292 (BS: 5351)



**KIRLOSKAR BROTHERS LIMITED**  
A Kirloskar Group Company

# BALL VALVE

Widely used in variety of liquids in General Industries, Water Works, Food and Beverages, Power, Building and Construction and Marine.

## Applications :

- Suitable for variety of liquids in process and General Industry, Water Works, Air, Oil, Steam Gas, Corrosive chemicals, Power Plants, Sewage plants, Chemical & Petrochemical Plants, etc for tight shut off and ON - OFF application

## Special Features :

- Floating Type 3 Piece body constructional Design allows easy maintenance and replacement of seat without removing valve from pipe
- Blow - out proof stem design
- Superior finish ball and Sphericity ensures extended seat life and low operating torques
- End connections available in Screwed / Socket Weld / Flanged

## Salient Constructional Features :

- **Standard Construction:**
  - 3 Piece Screwed / Socket / Flanged End body Full Bore design to withstand specified pressures
- **Optional Construction:**
  - 2 Piece Flanged End body Full Bore or Reduce Bore design to be available on request consult to Design Office
  - 1 Piece Flanged End or Screwed End body Full Bore design to be available on request consult to Design Office
  - 3 Piece Screwed End Full Bore or Reduce Bore body design available in Forged steel (A105) Valves, to be available on request consult to Design Office
  - 3 Piece Tri Clover End body design to be available on request consult to Design Office

## Material of Construction

Scope	Standard supply	Optional
Body	Carbon Steel	ASTM A351 Gr. CF8, ASTM A351 Gr. CF8M / A105
Ball	ST. ST. AISI - 304 / CF8	ST. ST. AISI - 316 / CF8M
Seat	PTFE	RPTFE
Stem	ST. ST. AISI - 304	ST. ST. AISI - 316
Seal / Packing / Gasket	PTFE	Graphite
Fastners	Carbon Steel	ST. ST. AISI - 304, ST. ST. AISI - 316 / B7 & 2H
Lever	Carbon Steel	ST. ST. AISI - 304, ST. ST. AISI - 316

Note: 1 For Special material of construction, please contact Design Office.

## Technical Specifications :

Design and Manufacturing Standard	IS: 9890 / BS EN ISO 17292 (BS: 5351)
	Screwed End (BSP) - BS 21
	Screwed End (NPT) - ASME B1.20.1
	Socket weld End - ASME B16.11
	Flanged End - ASME B16.5
Testing Standard	BS 6755 Part I / BS EN 12266 / API - 598 / IS 6157
Size Range	15mm to 50mm - Screwed / Socket weld End
	15mm to 100mm - Flanged End
Pressure Rating	CL 150 #

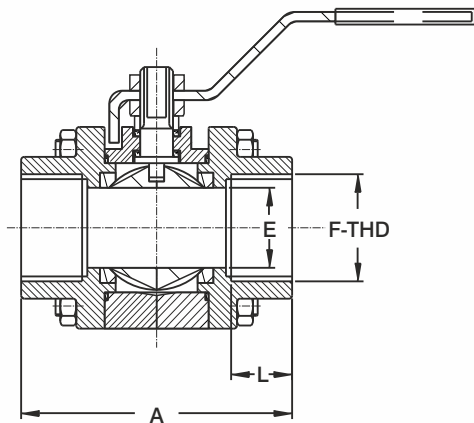
Note : 1. For Higher size and Pressure Rating contact Design Office.

## Operations :

Size	Rating	Operation
15 mm to 100 mm	# 150	Hand Lever

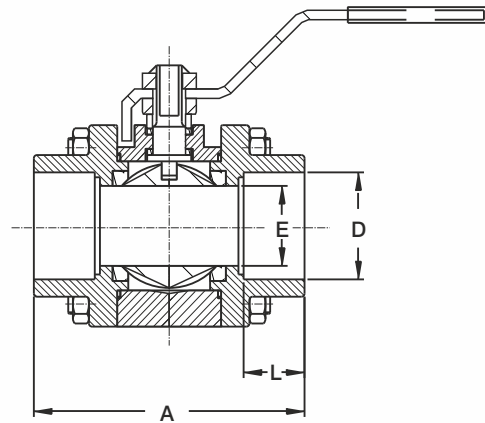
Note : 1. For any other operations like Gear Box or Actuator operated please contact design office.

## General Outline Drawing :



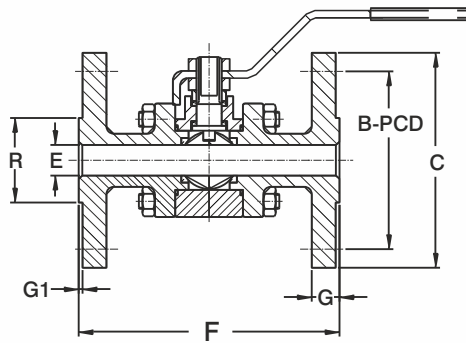
**Screwed End**

Size Range: Up to 2 inch



**Socket Weld End**

Size Range: Up to 2 inch



**Flanged End**

Size Range: Up to 4 inch

## General Outline Dimensions :

Sizes		Face to Face		øE	F - THD	øD	L	B-PCD	øC	G	øR	G1
		A	F		BSP / NPT							
1/2"	15	67	108	12.7	1/2"	21.7 - 22	16.5	60.3	89	11.5	34.9	2
3/4"	20	73	118	19	3/4"	27.1 - 27.3	18.5	69.9	98.4	11.5	42.9	2
1"	25	86	127	25.4	1"	33.8 - 34	21	79.4	108	11.5	50.8	2
1 1/4"	32	101	140	31.8	1 1/4"	42.5 - 42.8	25	88.9	117.5	13	63.5	2
1 1/2"	40	105	165	37.5	1 1/2"	48.6 - 48.9	22.5	98.4	127	14.5	73	2
2"	50	125	178	50	2"	61.1 - 61.4	26.5	120.7	152.4	16	92.1	2
2 1/2"	65	-	191	64	-	-	-	139.7	178	17.5	104.8	2
3"	80	-	203	75.4	-	-	-	152.4	190.5	19	127	2
4"	100	-	229	99.5	-	-	-	190.5	229	24	157.2	2

Note: 1. All Dimensions are in 'mm' otherwise stated.

2. Please refer to Design Office for higher sizes

## End Connection :

Scope	Screwed / Socket weld End / Flanged End
Standard Supply	BSP / NPT / ANSI B 16.5 #150 RF
Optional	IS 554

## Accessories :

- Gear Box
- Electrical Actuator
- Pneumatic Actuator

## Hydrostatics Test Pressures :

Scope	Manufacturing Standard and Pressure Rating	Hydrostatic test Pressures Kg/Cm2	
		Body	Seat
Standard Supply	#150	30	22
Optional	For higher Pressure ratings can be supplied on case to case basis.		



# OUR GLOBAL PRESENCE



# ABOUT KBL

Kirloskar Brothers Limited (KBL) is a world class pump manufacturing company with expertise in engineering and manufacture of systems for fluid management. Established in 1888 and incorporated in 1920, KBL is the flagship company of the \$ 2.1 billion Kirloskar Group. KBL, a market leader, provides complete fluid management solutions for large infrastructure projects in the areas of water supply, power plants, irrigation, oil & gas and marine & defence. We engineer and manufacture industrial, agriculture and domestic pumps, valves and hydro turbines.

In 2003, KBL acquired SPP Pumps, United Kingdom and established SPP INC, Atlanta, USA, as a wholly owned subsidiary of SPP, UK to expand its international presence. In 2007, Kirloskar Brothers International B.V., The Netherlands and Kirloskar Brothers (Thailand) Ltd., a wholly owned subsidiary in Thailand, were incorporated. In 2008, KBL incorporated Kirloskar Brothers Europe B.V. (Kirloskar Pompen B.V. since June 2014), a joint venture between Kirloskar International B.V. and Industrial Pump Group, The Netherlands. In 2010, KBL further consolidated its global position by acquiring Braybar Pumps, South Africa. SPP MENA was established in Egypt in 2012. In 2014, KBL acquired SyncroFlo Inc., the largest independent fabricator of commercial and municipal domestic water booster pumps.

To further strengthen its global position, in 2015, Kirloskar Pompen B.V. acquired Rodelta Pumps International, The Netherlands.

KBL has joint venture cooperation with Ebara, Japan since 1988 for the manufacture of API 610 standard pumps. Kirloskar Corrocoat Private Limited is a joint venture cooperation with Corrocoat, UK since 2006. KBL acquired The Kolhapur Steel Limited in 2007 and Hematic Motors in 2010.

KBL has eight manufacturing facilities in India at Kirloskarvadi, Dewas, Kondhapuri, Shirwal, Sanand, Kaniyur, Kolhapur and Karad. In addition, KBL has global manufacturing and packaging facilities in Egypt, South Africa, Thailand, The Netherlands, United Arab Emirates, United Kingdom and United States of America. KBL has 12,700 channel partners in India and 80 overseas and is supported by best-in-class network of Authorised Centres and Authorised Refurbishment Centres across the country.

All the manufacturing facilities at KBL are certified for ISO 9001, ISO 14001, ISO 50001, BS OHSAS 18001 and SA8000. In addition, the Kirloskarvadi plant is also certified for N & NPT Stamp. KBL's corporate office in Pune is certified for ISO 9001 & Sa8000.

The factories deploy Total Quality Management tools using European Foundation for Quality Management (EFQM) model. The Kirloskarvadi plant of KBL is a state-of-the-art integrated manufacturing facility having Asia's largest hydraulic research centre with testing facility upto 5000 kW and 50,000 m<sup>3</sup>/hr.

KBL is the ninth pump manufacturing company in the world to be accredited with the N and NPT certification by American Society of Mechanical Engineers (ASME).

---

## Pumps | Valves | Hydro Turbines | Turnkey Projects

Water Resource Management | Irrigation | Power | Industry | Oil & Gas | Marine & Defence | Building & Construction | Distribution (Small Pumps) | Valves | Customer Service & Spares

---

## KIRLOSKAR BROTHERS LIMITED

### A Kirloskar Group Company

Registered Office: Udyog Bhavan, Tilak Road, Pune 411002. Tel: +91(20)24440770  
Global Headquarters: "Yamuna", Survey No. 98/(3.7), Baner, Pune 411045. Tel: +91(20)27214444  
Email: [marketing@kbl.co.in](mailto:marketing@kbl.co.in), Website: [www.kirloskarpumps.com](http://www.kirloskarpumps.com), CIN No.: L29113PN1920PLC000670

#### OUR COMPANIES



United Kingdom



U.S.A.



South Africa



India



The Netherlands

Kirloskar Brothers Limited reserve the right to make alteration from time to time and such our products / equipments may differ from that detail in this publication. For latest information you may get in touch with our Regional Sales Offices.